



# **Conference report**

**on**

## **Annual conference of IUFRO Research Group 4.05.00 - Managerial economics and accounting - and its Working Parties**

**Title of the conference: Managerial forest economics and accounting as a base for  
decision making in a changing world**

**Date of the conference: 5.-7. September 2022**

**Venue of the conference: Thünen Institute of Forestry, Hamburg, Germany**

**Webpage of the conference: <https://iufro2022-div405.thuenen.de>**

**Report written by:**

- **LYDIA ROSENKRANZ**, Thünen Institute of Forestry, Hamburg, Germany, Coordinator of IUFRO Working Party 4.05.01 Managerial, social, and environmental accounting, email: [lydia.rosenkranz@thuenen.de](mailto:lydia.rosenkranz@thuenen.de)
- **LIDIJA ZADNIK STIRN**, University of Ljubljana, Biotechnical Faculty, Ljubljana, Slovenia, Coordinator of IUFRO Research Group 4.05.00 Managerial Economics and Accounting, email: [lidija.zadnik@bf.uni-lj.si](mailto:lidija.zadnik@bf.uni-lj.si)

**Date of the report: 15. September 2022**

## **IUFRO Meeting Report Form**

Organizers of IUFRO meetings and IUFRO focal persons at IUFRO co-sponsored meetings, respectively, are kindly requested to fill in and return this form within two weeks after the meeting or by a given deadline by email (wolfrum@iufro.org). This information will be posted on the relevant IUFRO web pages and used for IUFRO News and the IUFRO Annual Report.

### **1) IUFRO focal person/meeting organizer:**

*Name: LIDIJA ZADNIK STIRN, University of Ljubljana, Biotechnical Faculty, Ljubljana, Slovenia*

*Function in IUFRO: Coordinator of IUFRO Research Group 4.05.00 Managerial Economics and Accounting*

*Email: lidija.zadnik@bf.uni-lj.si*

*Name: LYDIA ROSENKRANZ, Thünen Institute of Forestry, Hamburg, Germany*

*Function in IUFRO: Coordinator of IUFRO Working Party 4.05.01 Managerial, social, and environmental accounting*

*Email: lydia.rosenkranz@thuenen.de*

### **2) Meeting data:**

*Full title of the meeting: **Managerial forest economics and accounting as a base for decision making in a changing world***

*Date and venue: **5.-7. September 2022, Thünen Institute of Forestry, Hamburg, Germany***

*Meeting website: <https://iufro2022-div405.thuenen.de>*

*Number of participants: 37 (+1 participant from United States: pre-recorded talk)*

*Countries represented: Germany, Italy, Poland, Slovenia, Czech Republic Ecuador, Austria, Croatia, Finland, Serbia, Switzerland, and United Kingdom*

*Presentations:*

There were 17 scientific events performed:

- At the Opening 4 speeches were given:
  - ✓ Matthias Dieter, Director of Thuenen Institute of forestry,
  - ✓ John Parrotta, president of IUFRO,
  - ✓ Lidija Zadnik Stirn, coordinator of IUFRO RG 4.05.00
  - ✓ Lydia Rosenkranz, organizer of the conference
- Keynotes (2)
- Sessions (6) with paper presentations (22)
- Closing session (3)
  - ✓ wrap up of the conference and thanks to organizers and participants, presenters, esp. keynote speakers (given by Lidija Zadnik Stirn); she

expressed many thanks, above all, to the organizers and hosts of this conference, i. e. the Thünen Institute of Forestry in Hamburg, a valued member organization of IUFRO for many years, with the Institute's Director, Prof. Matthias Dieter, Dr. Lydia Rosenkranz, Anja Peuse, Cornelius Regelman Kristin Franz, Björn Seintsch, and many others who helped that this important event was arranged.

- ✓ invitation to the forthcoming 4.05.00 conference in 2023 (Vasja Leban);
- ✓ concluding remarks and farewell (Lydia Rosenkranz)
- Business (administration) meeting of IUFRO RG 4.05.00 (1)

Further there were 4 social events at the conference:

- Welcome get together (1)
- Harbour boat trip (1)
- Conference dinner (1)
- Field trip (1)

The business meeting of RG 4.05.00 which was following the closing of the conference was chaired by Lidija Zadnik Stirn with support of several RG 4.05.00 members/officeholders (Lydia Rosenkranz, Davide Pettenella, Stjepan Posavec, Maria Nijnik, Mariana Melnykovich, Vasja Leban, Anže Japelj, Björn Seintsch et al.)

### 3) Organization of the meeting:

*IUFRO Units involved:*

- Research Group 4.05.00 – Managerial economics and accounting
- Working Party 4.05.01 – Managerial, social, and environmental accounting
- Working Party 4.05.02 – Managerial economics
- Working Party 4.05.03 – Managerial economics and accounting in Latin America
- Working Party 4.05.04 – Forest-based value chains
- Working Party 4.05.05 – Social innovation and entrepreneurship
- With the support of IUFRO president J. Parrotta,

*Host organization:* Thünen Institute of Forestry, Hamburg, Germany

*Supporting organization(s):* ---

*Study tour(s) to:* A field trip to Lueneburg Heath, south of Hamburg, was organized. In the morning, there was a guided walk in the forest, with foresters from the Chamber of Agriculture of Lower Saxony, forestry office Nordheide-Heidmark, during which participants learned about typical forestry measures in the Lueneburg Heath region. The forestry office Nordheide-Heidmark is responsible for advice and support of privately owned, corporate and cooperative forests in 23% of the Lower Saxony territory. The region is dominated by private owned forest which amounts to 2/3 of the territory. With more than half of the area, Scots pine is dominating the forests, followed by Spruce whereas other tree species play a minor role. In order to adapt the regions forests to climate change, foresters are currently working

on increasing the share of Beech, Douglas fir, and Northern red oak by promoting and restructuring measures. Also, birch and alder, with low rotation periods, are promoted.

In the afternoon, participants took a guided walk through the typical heath landscape. The Lueneburg Heath, is a cultural landscape, which evolved from extensive use of topsoil for fertilization of cropland and bedding in stables in former times. This depletion of soils led to an extensive spreading of typical heathland plants such as *Calluna vulgaris* and juniper, forming a unique biotope for specialized species as well as a popular area for tourism. Today, the Lueneburg Heath is a protected area which is regularly kept open by nature protection workers, also using the help of typical heathland sheep, the “Heidschnucke”. The participants of the field trip were explained the history of the Heath as well as the species and typical conservation work, even meeting the shepherdess with her herd.

#### 4) Meeting report

##### *a) Background information (meeting context)*

This IUFRO 4.05.00 conference is the scientific event in forest managerial economics and accounting, another one in the series of annual conferences organized by the IUFRO research group 4.05.00 and broader. The first arrangements for this conference started in 2021 at the RG 4.05.00 annual conference in Brno, Czech Republic where the delegates decided to hold the 2022 conference at Thünen Institute of Forestry, Hamburg, Germany.

The conference was aimed at researchers and practitioners engaged in managerial, social, and environmental forest economics and accounting, management of forest enterprises, forest ecosystem services, land-use, resource policy, social innovation, decision support making, and related fields under the bio-economy paradigm. The conference was targeted to theme 1 of the IUFRO strategy: "Forest for people".

Further, the forestry sector is significantly affected by climate change, continuing losses of forest area and habitats, intensified land-use competition, so the pressure and demands on forests and forestry is strong. To face these challenges, forest owners, scientists, administrative staff and politicians on all levels must make informed choices on future forest management activities. Managerial economics and accounting are important analytical instruments for identifying and evaluating forest management action alternatives and to support knowledge-building and decision-making.

According to these facts, the conference targeted to foster the scientific exchange on recent developments, research and best practices from managerial economics and accounting on regional, national, and international level, focussing on:

- ❖ Managerial economics and accounting based on monitoring, modelling, and accounting tools for climate change and policy impact assessment
- ❖ Forests and society

- ❖ Role of (small-scale) forest enterprises / forest owner associations in a changing world
- ❖ Inclusion of environmental, cultural, and social aspects of forestry in economic accounting
- ❖ Evaluation of conflicting societal demands on forests and forestry
- ❖ Forestry and rural areas - employment in the forestry sector
- ❖ Value chains, innovations, and knowledge building for maintaining sustainable forest management
- ❖ Transdisciplinary research in forestry.

*b) Key issues discussed/latest findings in the field (bullet points or text)*

The issues presented and conferred reveal high diversification from the thematic and geographic point and interdivisional, interdisciplinary, and interinstitutional cooperation. The topics addressed and critically discussed include presentations of two keynote speakers and 22 presentations in six ordinary sessions.

The keynote speakers communicated on:

- Prof Dr. Matthias Dieter, Director of Thünen-Institute of Forestry, Hamburg confessed on challenges for forestry from European perspective with the emphasize on future roundwood provision in the light of climate change mitigation, nature protection and current political developments.
- Prof Dr. Carola Paul, University of Göttingen conferred about data needs for next-generation decision-support in forest management focusing on valuation of ecosystem services regarding economic consequences on forests in Central Europe, based on bio-economic, simulation, multi-criteria decision analyses, land-use allocation approaches and participatory modelling.

In six sessions, the contributors discussed on:

- Valuation of economic consequences of forest damages and management because of changing conditions, restoration costs (cases came from Germany, CZ, Croatia)
- Economic valuation considering impacts of EU policies (Biodiversity strategy 2030, EU timber regulation, EU Forest strategy 2030, etc.), (cases came from Germany, Croatia, Serbia, Slovenia, Poland)
- Valuation of wood and non-wood products based on social accounting, natural capital valuation, market analysis, competition of trade-offs (cases of Italy, Scotland, Serbia, Germany)
- Analysis of income from forests regarding the family owners, private forest owners, urban forests, collectively managed forests (cases of Finland, Germany)
- Forests for society where the presenters tackled state services provided for small forest owners close to urban areas, local resident's perceptions on natural resource management, ecosystem services disturbed by climate change and war, forest owner's cooperation (cases of CZ, Slovenia, Ukraine, Switzerland)
- Problem of employment and workforces in forestry sector (case of Ecuador and EU)

- Wood supply chain in the light of bioeconomy and sustainable production (case of EU)

c) *Conclusions (if possible, summarize key conclusions across presentations):*

- IUFRO President Dr. John Parrotta in his welcome talk at the opening of the conference, among others
  - ✓ stressed that valuation of forest ecosystem services and natural capital accounting more generally have the potential to transform land-use planning and decision-making, particularly in parts of the world where forests are being lost and degraded at alarming rates
  - ✓ pointed out that the central role of forests in supporting life on this planet is not adequately valued by many governments and others whose investments and land management activities currently drive deforestation and forest degradation, i. e. forest loss and degradation are closely linked to governance failures and lack of policy coordination among sectors; on the other hand, the governance and policy coordination is being made; at the global level, for example, the 2030 Agenda for Sustainable Development provides an important framework for policy coordination and planning, while at the national level, Natural and Social Capital Accounting is being explored by many governments as a tool for intersectoral policy coordination and planning to ensure that the long-term values and services provided by forests and other natural and managed ecosystems
  - ✓ recommended to the participants and RG 4.05 members to develop one (or more) session proposals on natural and capital accounting in land management, planning and policymaking for the 2024 IUFRO World Congress to be held in Stockholm
  - ✓ made a call to the participants/RG 4.05.00 members and wider for proposing an inter-disciplinary Task Force on valuation of forest ecosystem services and/or natural and social capital accounting for the upcoming 2024-2029 IUFRO term

The keynotes and other presenters concluded as important that:

- the provision of roundwood in Europe is very uncertain above all because of climate change mitigation and current political situation
- refinement of monetary and non-monetary valuation methods and tools according to new environmental and social conditions is needed
- the economic losses from forestry sector are expected also in the future above all because of extreme weather changes (the research from Germany in 2018-2021)
- the policy (EU Biodiversity Strategy 2030 for example) impact analysis shows that the carbon mitigation costs derived from opportunity costs will rise substantially
- the value of non-wood forest products measured by Social Accounting methods will increase because of changes in society and increased human wellbeing demands

- natural capital valuation can help to resolve potential conflicts linked to demands on ecosystem services and guide to the prevention of damaged that cause cost on society
- the employment situation in Europe within the whole forest-related value chain will be worse; the lack of workers, job quality and gender inequity will be significant
- environmental awareness and perceived threats on natural resource management is increasing
- the demand on wood will considerably increase (analysis of the market in eastern part of Europe using statistical analysis/trends for demand)

*d) Outlook to future activities (proceedings, future meetings, other):*

- Book of extended abstracts (80 pages, Book of Extended Abstracts of Annual Conference of the IUFRO Research Group 4.05.00 Managerial Economics and Accounting and its Working Parties, September 4-7, 2022, on-line: <https://iufro2022-div405.thuenen.de>, <https://www.iufro.org/science/divisions/division-4/40000/40500/> publisher: Thünen Institute of Forestry, Hamburg, Germany, Editors: Lydia Rosenkranz, Kristin Franz, Björn Seintsch, Hamburg, 2022),
- IUFRO report (this one),  
posted also on <https://www.iufro.org/science/divisions/division-4/40000/40500/>
- The next Division 4.05.00 meeting will take place in Ljubljana, Slovenia in September 2023 and will be organized by Vasja Leban, Lidija Zadnik Stirn and Anže Japelj, host institutions: University of Ljubljana, Biotechnical Faculty Slovenian Institute of Forestry.
- Minutes of Administrative/Business meeting of RG 4.05.00 organized on 6 September 2022 in the frame of this conference (summarized by Lidija Zadnik Stirn) will be posted at web of IUFRO RG 4.05.00: <https://www.iufro.org/science/divisions/division-4/40000/40500/>  
[https://www.iufro.org/science/divisions/division-4/40000/40500](https://www.iufro.org/science/divisions/division-4/40000/40500/)



#### 4) Photos



Picture 1: group photo of the participants (taken by L. Rosenkranz)



Picture 2: conference hall before the beginning of the conference (taken by L. Rosenkranz)

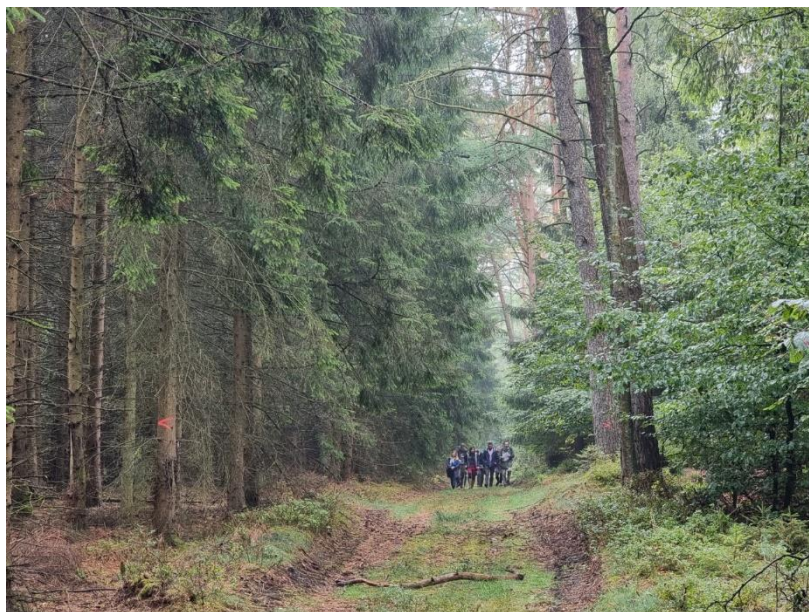




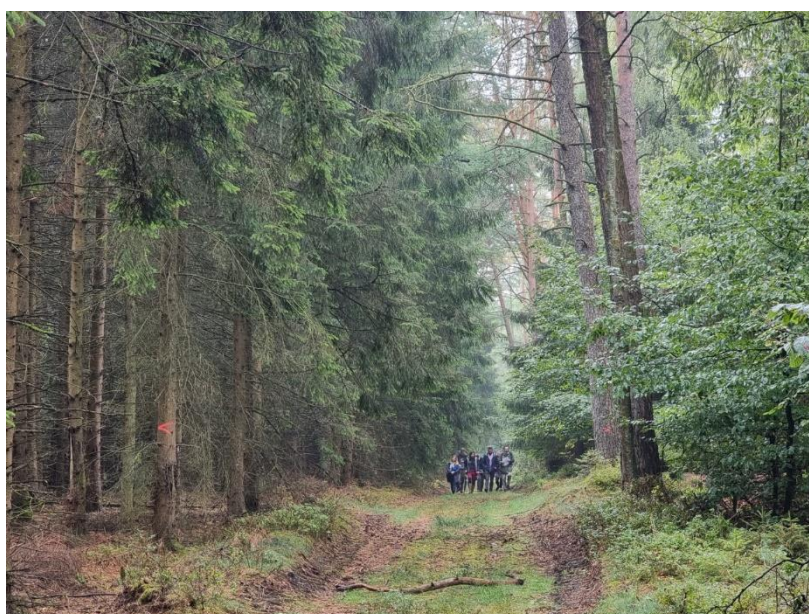
Picture 3: Field trip (Sept, 7, 2022, taken by L. Rosenkranz)



Picture 4: Field trip (Sept. 7, 2022, taken by L. Rosenkranz)

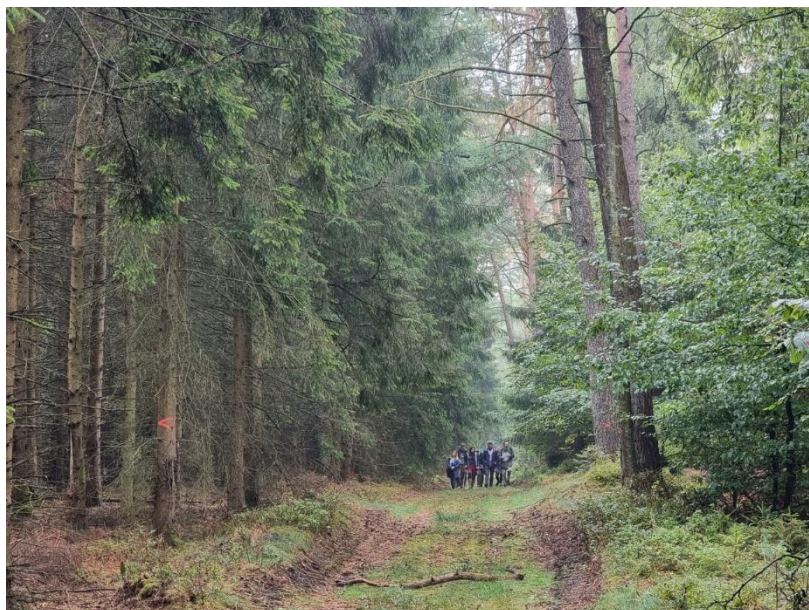


Picture 4: Field trip (Sept. 7, 2022, taken by L. Rosenkranz)



Picture 5: Field trip (Sept. 7, 2022, taken by L. Rosenkranz)





Picture 6: Field trip (Sept. 7, 2022, taken by L. Rosenkranz)



Picture 7: Field trip (Sept. 7, 2022, taken by L. Rosenkranz)

## 5) Other information:

- a) *Communication activities (dissemination of information about the meeting; promotion of IUFRO)*

The conference was promoted via IUFRO official website (<https://www.iufro.org/science/divisions/division-4/40000/40500/activities/>), IUFRO calendar of events, IUFRO mailing lists, mailing lists of officeholders, mailing lists of

Thünen Institute of Forestry, Hamburg, Germany, conference website, lists of conference partners and their media, at the universities and institutes of conference participants. Further, communication: book of abstracts, presentations at the conference website

In addition, posts were made on social media to promote the event:

[https://twitter.com/M\\_Melnykovich/status/1570102418293096453](https://twitter.com/M_Melnykovich/status/1570102418293096453)

<https://twitter.com/MariaNijnik/status/1570695109183967232>

<https://www.linkedin.com/feed/update/urn:li:activity:6977593137259028481/>

*b) Related publications /websites*

- Conference homepage: <https://iufro2022-div405.thuenen.de>
- Conference Program: <https://iufro2022-div405.thuenen.de>
- List of conference participants: <https://iufro2022-div405.thuenen.de>
- Book of abstracts:  
<https://iufro2022-div405.thuenen.de>,  
<https://www.iufro.org/science/divisions/division-4/40000/40500/>