



Mikell Camp and Conference Center

The Conference Center for the Diocese of Atlanta

CAMP PROFILE & EXECUTIVE DIRECTOR SEARCH



ABOUT CAMP MIKELL

In a beautiful natural setting, Mikell Camp and Conference Center strives to be a home away from home that exceeds our guests' expectations. Since 1941, Mikell has been a retreat in the North Georgia mountains for thousands of summer campers, conference attendees, and outdoor education students. The ministry of Mikell, through the programming we provide and the holy grounds of our rural campus, is to be a sacred place apart from a chaotic world.

Built initially as a summer camp for the youth of The Episcopal Diocese of Atlanta, Mikell expanded to year-round ministry in the 1980s. Today, weekend parish retreats and conferences bring adults and families to Mikell year round. Blue Ridge Outdoor Education Center, established in the 1990s, is a destination for environmental education for students from across Georgia and the southeast.

Located in Stephens County, five miles outside of the city of Toccoa (population 9,000) and ninety minutes northeast of Atlanta, Mikell encompasses 468 serene acres bordering the Chattahoochee National Forest. A property comprising mostly forested hillside, split on the valley floor by Little Toccoa Creek, Mikell has plenty of space for playing and praying, hiking and learning, dining and enjoying the company of other guests.

Mikell's annual budget is \$1.25 million (excluding Executive Director compensation), with revenues primarily coming from fees: summer camp (30%), conferences and retreats (30%), and Blue Ridge Outdoor Education Center (20%). Fundraising — via the annual campaign, special projects, and in-kind donations — is also critical to Mikell's success. The Walking in Faith capital campaign, an ambitious \$7 million campaign to improve camp's accommodations and meeting space, will serve as a catalyst for future giving.

Table of Contents

Introduction 02

OUR STORY

Camp Programs 04

OUR MINISTRY

Facilities 06

OUR SPACE

Leadership 08

OUR PEOPLE

Looking Ahead 10

OUR FUTURE

Camp Programs

OUR MINISTRY



SUMMER CAMP

Summer camp at Mikell consists of week-long sessions for rising third graders through graduated high school seniors: four "traditional" sessions divided by age, plus two additional camp sessions (Work Camp and Performing Arts Camp) and a session, culminating the summer program, for Emmaus House, an urban ministry of the Diocese of Atlanta.

Mikell's summer begins with a weekend Mini Camp (for rising 1st-2nd graders with a parent) and ends with Guest Camp, when campers of all ages (children and adults, families and singles) spend Labor Day Weekend together.

Summer camp is staffed by 18-20 college-aged seasonal employees, aided by volunteer high-school counselors and supplemented by volunteer deans and stipended nurses from across the Diocese.



BLUE RIDGE OUTDOOR EDUCATION CENTER

Blue Ridge Outdoor Education Center provides experiential education programming based on Georgia Standards of Excellence for students of all ages.

Participating groups learn about the world around them through a variety of cross-curricular classes that incorporate earth sciences, history, language, math, and interpersonal skill development. School groups typically spend three days and two nights at Mikell, and weekend groups are able to select classes from Blue Ridge to supplement their retreats.

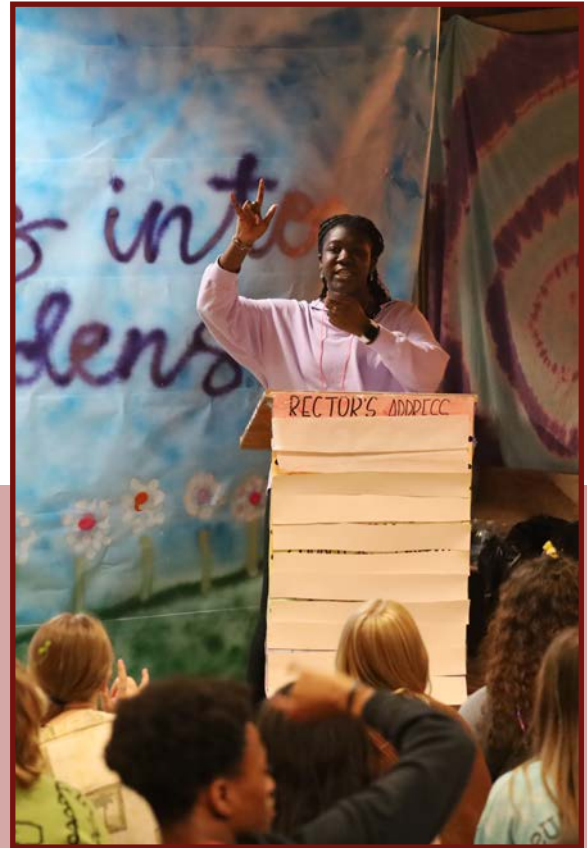
Blue Ridge staff includes a full-time director and assistant director as well as 5-8 seasonal employees.



FOLK SCHOOL

Now in its twenty-fifth year, the Allan Folk School was born out of Work of Our Hands, a ministry founded by Elizabeth and Frank Allan (8th bishop of the Episcopal Diocese of Atlanta) and Glenna Smith, among many others. Work of Our Hands promoted art in underserved populations, and the Folk School continues that tradition at Mikell, drawing on the community-art model of John C. Campbell and other schools.

Housed primarily in the St. Joseph the Carpenter Art Center and other spaces throughout the camp, the twice-yearly weekend is full of creation: stained glass-making, woodturning, quilting, weaving, and more. The beautiful stained glass, wall hangings, altar, and chalice in the Mikell Chapel were all made and donated by Folk School artists. This program offers opportunities for additional honorary/memorial gifts to the camp.



CONFERENCES & RETREATS

Each year, Mikell hosts dozens of parish retreats, board meetings, weddings, and personal spiritual getaways. These private events range in size from less than a dozen to more than a hundred, and Mikell provides a range of support for these retreats, including room and board, meeting spaces, and Blue Ridge-facilitated programming.

These groups include a wide variety of constituencies: past retreats have been made by Episcopal parishes, interfaith youth groups, addiction recovery groups, secular business organizations, and gatherings of people from other faith backgrounds.

Facilities

OUR SPACE



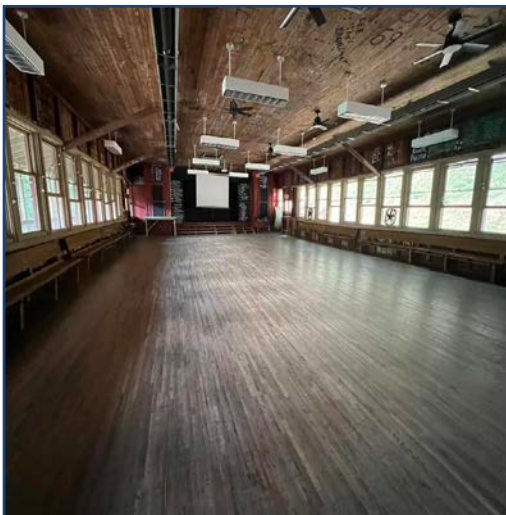
Warren Scott Dorm

AN UPPER CAMP CABIN



Retreat Village

A LOWER CAMP CABIN



Old Dining Hall

MIDDLE CAMP MEETING SPACE



Nelson Dining Hall

MIDDLE CAMP MEAL SPACE



A view of the cross (background) and main middle camp buildings from Crow Hill.



Camper diving into the swimming pool during a summer camp session.



A view of Mikell Chapel from the driveway into middle camp.



Students playing on the four square court during a youth retreat.

Hundreds of guests of all ages visit Mikell annually, staying in accommodations built over the life of the camp. Mikell currently has 243 beds in 19 cabins and cottages.

Six double-sided dorm-style cabins “up the hill” (Stephens, Thomas, Scott, Luke, Claiborne, and Eppes) house the majority of our young guests at summer camp, youth retreats, and school trips. Each of these cabins sleep 26-30 in an open arrangement, with newly renovated bathrooms that allow for maximum privacy.

Five private cottages in middle camp include Smith (the original 1940s infirmary), Sims, and Alexander, and our newest accommodations, Osborne and Harrison. The rooms in all cottages have private baths, except for Smith and Sims which have shared bathrooms. In addition to sleeping accommodations, these cottages offer a variety of indoor and outdoor meeting space for small groups and families.

The Retreat Village, erected in the early 1990s from modular components, sits down the hill near the creek. These motel-style rooms each have two queen beds and private bathrooms. Each also abuts a porch, with most overlooking the creek. Although these rooms are still used often, their useful life is nearing an end and we hope to replace them with a more permanent retreat village, contingent on the success of the Walking in Faith capital campaign over the next several years.

The iconic Mikell Chapel welcomes visitors as they enter the main driveway (newly expanded to two lanes). The kitchen staff serves hot meals three times daily from the commercial kitchen in the Nelson Dining Hall. Up to 200 guests gather 9-apiece at round tables for communal meals before going on to their next activity.

Mikell offers numerous indoor meeting spaces, including the Old Dining Hall (Wilkins), Walthour, the Retreat Village conference center, and smaller communal spaces in cottages and cabins. Outdoors, there is plenty of space to meet and play! Miles of trails wind through the hillsides, the creek and swimming pool provide cool relief on hot summer days, and three athletic fields offer space to play year-round. A 9-hole disc golf course invites players of all experience levels. The cross atop the western hillside is visible from many parts of camp, and is a favorite hiking destination.



Bishop Rob Wright

Leadership

OUR PEOPLE

Camp Mikell is a ministry of The Episcopal Diocese of Atlanta, led by the Right Rev. Robert C. Wright, Bishop. Geographically, the Diocese covers Middle and North Georgia, and Mikell is its only camp and conference center.

The Mikell Board of Governors is responsible for the programmatic and budgetary well-being of the organization. Membership of the board is directed by Canon 8 of the Diocese of Atlanta and includes:

- *The bishop, director, and a chairperson appointed by the bishop;*
- *An elected treasurer;*
- *And others appointed by the bishop, elected at diocesan council, and representing Episcopal Church Women.*

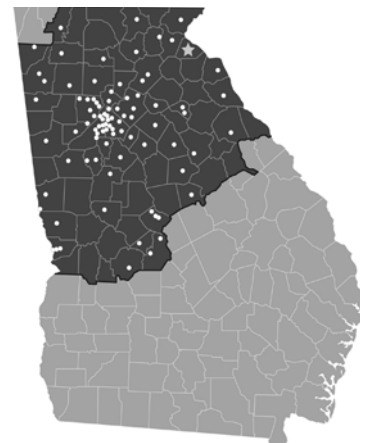
In addition to its budgetary responsibility, the Board creates policy and advises the Executive Director, often via committees such as the Diversity, Equity, and Inclusion Committee.

Mikell's day-to-day operations are managed by a staff of dedicated employees. The Executive Director oversees all operations and staff. Full time directors of the summer camp and Blue Ridge programs lead teams of seasonal employees who carry out the ministry with campers. These programs remain successful through the support of kitchen, maintenance, and housekeeping staffs and a full-time office manager.

ABOUT THE DIOCESE

The Episcopal Diocese of Atlanta was established in 1907 and consists of 120 parishes and worshipping communities in Middle and North Georgia. It is the eighth-largest diocese in The Episcopal Church.

Although it is named for Georgia's capital city, The Diocese of Atlanta spans 75 1/2 counties and includes the cities of Macon and Columbus, as well as the University of Georgia.



MIKELL STAFF



Looking Ahead

OUR FUTURE

Mikell Camp and Conference Center, a ministry of The Episcopal Diocese of Atlanta, is seeking our next Executive Director. Nestled in the foothills of the Appalachian Mountains outside of Toccoa, GA Mikell's campus is 468 acres of sacred space surrounded by rolling hills and national forest. A respite from the hustle and bustle of daily life, Mikell offers an opportunity to unplug and reflect, fostering spiritual development surrounded by the beauty of God's creation.

The ministry of Mikell is to provide an inclusive environment for a faith-based summer camp for children and youth, an outdoor education center, and a conference center for groups and retreats of all types. In a beautiful and natural setting, Camp Mikell strives to be a home away from home that will exceed our guests' expectations.

Our ideal Executive Director will be a committed relationship-builder who can nurture staff, community, and diocesan relationships to further both the mission and financial well-being of Mikell. We seek a visionary leader, effective fundraiser, and excellent communicator who is well-grounded in the Christian faith and Episcopal tradition. Lay or ordained, the Executive Director will be entrusted with maintaining the spiritual vitality of Mikell.

LIVING IN TOCCOA



With a population of 9000, Toccoa is the seat of Stephens County. Considered “The Heart of Northeast Georgia,” it is located 90 miles northeast of Atlanta and is just a stone’s throw from the Chattahoochee National Forest. Toccoa offers easy access to plentiful hiking, paddling, and other outdoor activities.

Toccoa’s historic downtown has been the focus of significant renovation and renewal efforts, and is now home to numerous shops, restaurants, city walks and parks. The Historic Ritz Theater provides a wide assortment of theatrical programs, musical series provided by the Toccoa Symphony Orchestra, and other events. Downtown Toccoa also plays host to two annual arts and culture festivals, and is the home of a thriving classic car culture. Stephens County Medical Center is a fully-appointed regional hospital serving five surrounding counties.

CAPITAL CAMPAIGN

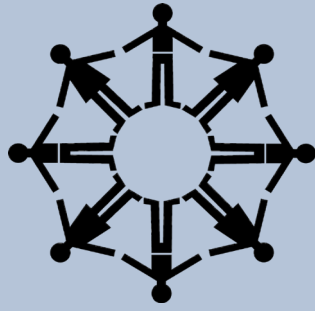
With strong support from the diocesan bishop and the Mikell Board of Governors, Mikell is currently in the midst of a \$7 million dollar capital campaign to rebuild, replace, and enhance various facilities for safety and functionality. While there is a solidly functioning steering committee in place for the capital campaign, we are seeking an Executive Director with a passion for hospitality and prayerful, compassionate leadership who can guide the organization during this exciting and transformative time and beyond. We look forward to an Executive Director who will work with us to successfully balance the value of long-standing Mikell traditions with the importance of positioning our programs for the future.



the CAMPAIGN *for* MIKELL
WALKING
in FAITH



Top & Bottom images on right are developer renderings of the new Mikell Retreat Village, a project of the capital campaign.



Mikell Camp and Conference Center

Executive Director Description

The Executive Director is a full-time, salaried position on the staff of the Bishop of the Diocese of Atlanta, who, with the support of the Mikell Board of Governors, will oversee Mikell's staff, programs, and facilities. Mikell, along with the Blue Ridge Outdoor Education Center, has eight full-time staff members, multiple part-time and seasonal staff, and an active Board of Governors.

We are seeking an engaging servant leader with a passion for youth development, summer camp, and community building. A successful candidate should demonstrate success and a capacity for continuous development in:

- *Fostering strong staff relationships among a diverse full-time, part-time, and seasonal staff to ensure engagement and effectiveness;*
- *Encouraging and promoting permanent and seasonal staff developmental programs;*
- *Partnering with the Board of Governors and related committees to develop, guide, and execute a strategic plan;*
- *Creating and implementing new programs.*

The specific leadership responsibilities of the Executive Director include three core areas:

1. *Mission-Driven Hospitality*
2. *Marketing & Development*
3. *Financial Management*

Mission-Driven Hospitality (40%)

Mikell hosts thousands of guests each year in a variety of retreats and conferences, summer camp sessions, and outdoor education events. Guests dine three meals per day in a 180-seat dining hall, and stay in accommodations including thirty-nine guest rooms and six dormitory-style cabins. Candidate should be able to demonstrate success at:

- *Ensuring that every facet of Mikell's ministry displays a high standard of customer service;*
- *Seeking and implementing creative strategies of welcoming hospitality;*
- *Maintaining American Camping Association (ACA) Accreditation;*
- *Maintaining, enriching, and growing our existing guest community.*

Marketing & Development (30%)

Mikell's mission and ministry is as a place of hospitality for all its guests, and the Executive Director is responsible for maintaining and growing its reputation and capacity for succeeding in this mission. As the face of Mikell, the candidate should serve as the driving force for our philanthropic efforts. Candidate should be able to demonstrate success at:

- *Expertly communicating publicly and interpersonally, telling the organization's story with proficient speaking, writing, and listening skills;*
- *Maintaining existing relationships and building new relationships with guests, partner ministries, and donors.*

The ideal candidate will also display proficiency at:

- *Planning and executing effective and innovative approaches to stewardship, including annual campaigns, cultivating individual and alumni donorships, pursuing diocesan and corporate gifts, and applying for government and foundation grants;*
- *Expanding our conference programs and retreats to maximize our facilities utilization throughout the non-summer season;*

Financial Management (30%)

Mikell's annual budget is approximately \$1,250,000, which includes program income, diocesan support, and an annual campaign, with potential for growth in each area. The candidate should demonstrate experience and expertise in:

- *Building healthy budgets in partnership with the Board, and operating within them;*
- *Following standard financial practices;*

The ideal candidate will also display proficiency at:

- *Reading, interpreting, and ensuring accurate financial statements;*
- *Ensuring financial transparency across stakeholders.*



The ideal candidate will demonstrate a history of leadership and high performance overseeing an organization or a major department within a large organization. Experience within a faith-based non-profit, particularly a camp and conference center, is particularly sought.

A ministry of the Episcopal Diocese of Atlanta, Mikell Camp and Conference Center is an equal opportunity employer. It encourages a broad range of applicants.

The Executive Director is a member of the Diocese of Atlanta Bishop's staff. The salary is commensurate with experience, and includes a generous benefits package. .

Mikell is committed to diversity, equity, and inclusion (DEI) across the organization's programs, staffing, practices, and culture. The Executive Director is charged with advancing efforts that reinforce this commitment.

Qualified candidates should apply at bit.ly/MikellED with a cover letter and resume. Clergy should also complete the Office of Transitional Ministry questionnaire.





The Episcopal Diocese of Atlanta
2744 Peachtree Road Northwest
Atlanta, Georgia 30305

episcopalatlanta.org | campmikell.com